



Printing Basics

The difference between RGB and CMYK

[The difference between RGB and CMYK](#) | [What is RGB](#) | [What is CMYK](#)

The difference between RGB and CMYK

When designing for print, one of the most important things to remember is preparing your data in CMYK.

Data that is created in RGB colour mode, show really bright and vibrant colours on screen. Unfortunately, it's not possible to reproduce these same bright and vibrant colours in CMYK.

When necessary, we can convert RGB data to CMYK, but doing so makes the colours change. Those bright and vibrant colours become darker and dull in CMYK.

This is because the RGB colour range is a lot wider than the colours we can create in CMYK

RGB (Red, Green, Blue): uses light to create colours.

CMYK (Cyan, Magenta, Yellow, Black): uses ink to create colours.



Please note: The images you see on your monitor will always look somewhat different than the final printed piece. Monitors / Screens display colour with light, while offset / digital presses print with ink. There are going to be varying differences in the visual results of printed matter. This is an unfortunate but expected result of CMYK printing.

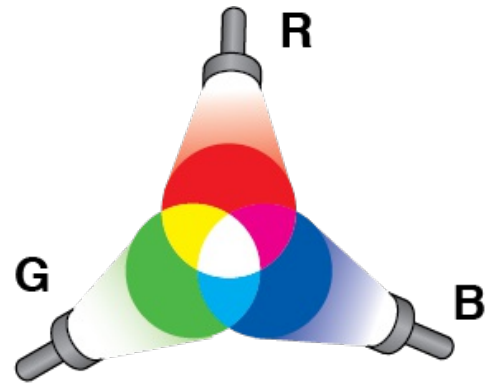
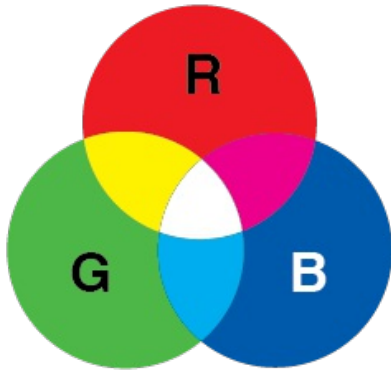
Metro Print will not be held responsible nor reprint orders due to poorly prepared data.

What is RGB? Monitors, TV screens & Phones show colour in RGB

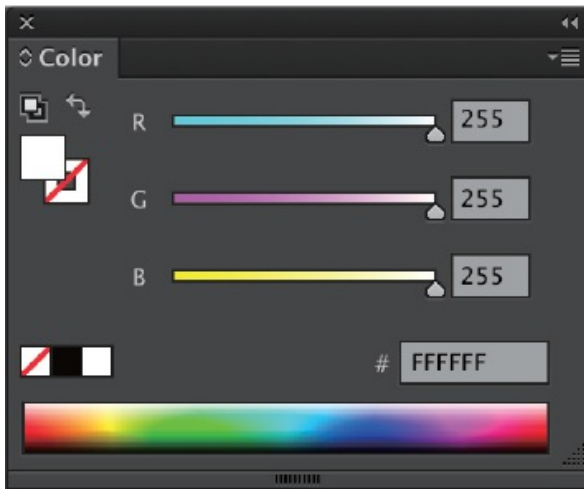
RGB stands for Red, Green and Blue. These are the primary colours of light. By mixing the light values, you get colours. You start with black, and as you mix them all you get white (light). RGB colour is used by devices that emit light, such as computer screens, TVs,

phones or LCD screens.

RGB: primary colours of light



Colour Palette

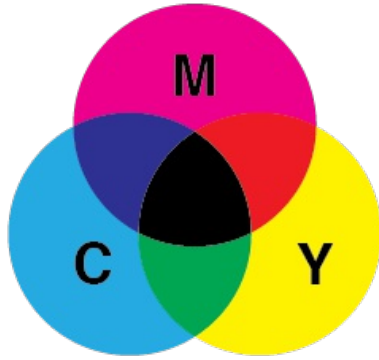


- R** Red
- G** Green
- B** Blue

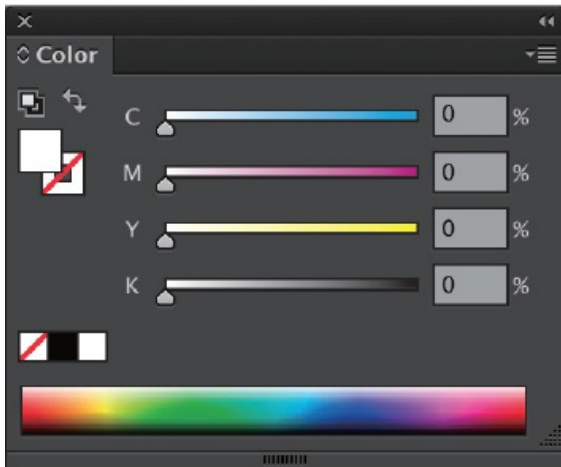
What is CMYK? Printing is CMYK

CMYK is the standard colour system used for printing. When we mix Cyan, Magenta, Yellow and Black inks, we create colours. As the CMYK inks overlap each other on the paper, they eventually go from white (paper) to black.

CMY: primary colours of ink



Colour Palette



- C** Cyan
- M** Magenta
- Y** Yellow
- K** Key Plate (Black)



Please note: Since RGB uses light and not ink, it is physically impossible to print RGB files without first converting them to CMYK, which is based on blending ink instead of light. Where colour accuracy is critical, we strongly recommend investing in a [printed sample](#) to avoid disappointment.